

## \$249,000 - 402 10528 77 Avenue, Edmonton

MLS® #E4430908

**\$249,000**

2 Bedroom, 2.00 Bathroom, 961 sqft

Condo / Townhouse on 0.00 Acres

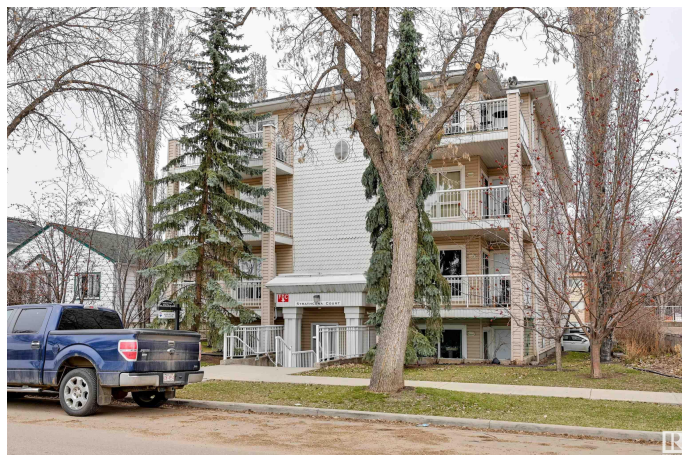
Queen Alexandra, Edmonton, AB

PARK VIEWS from this TOP FLOOR  
RENOVATED 2 bedroom 2 bathroom  
CORNER UNIT facing SOUTHWEST with a  
wrap around balcony located across from a  
school park, close to Whyte Avenue,  
transportation, the U of A & the U of A  
Hospital. Lots of natural light with an open  
concept floor plan. New refaced white  
cabinetry with white appliances & a window  
over the sink with west views. Corner linear  
electric fireplace in the living room. Brand new  
paint. Laminate flooring throughout except for  
tile in the kitchen & bathrooms. The primary  
bedroom suite has 2 closets & a full ensuite  
bathroom. Main 3 piece bathroom. Included  
is the stove, microwave hood fan, fridge,  
dishwasher, INSUITE WASHER & DRYER,  
blinds & A/C. Assigned covered parking and  
extra storage. 18+ building. Shows very well!

Built in 2000

### Essential Information

MLS® #	E4430908
Price	\$249,000
Bedrooms	2
Bathrooms	2.00
Full Baths	2
Square Footage	961
Acres	0.00



Year Built	2000
Type	Condo / Townhouse
Sub-Type	Lowrise Apartment
Style	Single Level Apartment
Status	Active

### Community Information

Address	402 10528 77 Avenue
Area	Edmonton
Subdivision	Queen Alexandra
City	Edmonton
County	ALBERTA
Province	AB
Postal Code	T6E 1N1

### Amenities

Amenities	Air Conditioner, Deck, Intercom, Security Door, Storage-Locker Room, Natural Gas BBQ Hookup
Parking Spaces	1
Parking	Stall

### Interior

Interior Features	ensuite bathroom
Appliances	Air Conditioning-Central, Dishwasher-Built-In, Dryer, Microwave Hood Fan, Refrigerator, Stove-Electric, Washer, See Remarks
Heating	Forced Air-1, Natural Gas
Fireplace	Yes
Fireplaces	Corner, Mantel, See Remarks
# of Stories	4
Stories	1
Has Basement	Yes
Basement	None, No Basement

### Exterior

Exterior	Wood, Vinyl
Exterior Features	Playground Nearby, Public Transportation, Schools, Shopping Nearby, See Remarks
Roof	Asphalt Shingles
Construction	Wood, Vinyl

Foundation                      Concrete Perimeter

**Additional Information**

Date Listed                      April 15th, 2025  
Days on Market                22  
Zoning                              Zone 15  
Condo Fee                        \$563

DATA IS DEEMED RELIABLE BUT IS NOT GUARANTEED ACCURATE BY THE REALTORS® ASSOCIATION OF EDMONTON. COPYRIGHT 2025 BY THE REALTORS® ASSOCIATION OF EDMONTON. ALL RIGHTS RESERVED.Trademarks are owned or controlled by the Canadian Real Estate Association (CREA) and identify real estate professionals who are members of CREA (REALTOR®, REALTORS®) and/or the quality of services they provide (MLS®, Multiple Listing Service®)  
Listing information last updated on May 7th, 2025 at 8:47pm MDT